

# NEWS RELEASE



**Media Contact:** [media@ph.lacounty.gov](mailto:media@ph.lacounty.gov) - (213) 240-8144

**For Immediate Release:**

May 6, 2020

## **Los Angeles County Announces 55 New Deaths Related to 2019 Novel Coronavirus (COVID-19)**

### *Public Health Unveils Five-Stage Recovery Roadmap*

LOS ANGELES – The Los Angeles County Department of Public Health (Public Health) has confirmed 55 new deaths and 851 new cases of 2019 Novel Coronavirus (COVID-19). Forty-one people who died were over the age of 65 years old and 12 people who died were between the ages of 41 to 65 years old. Thirty-eight people had underlying health conditions including 27 people over the age of 65 years old and 11 people between the ages of 41 to 65 years old. One death was reported by the City of Long Beach and one death by the City of Pasadena.

To date, Public Health has identified 28,644 positive cases of COVID-19 across all areas of LA County, and a total of 1,367 deaths. Ninety-two percent of people who died had underlying health conditions. Of those who died, information about race and ethnicity is available for 1,260 people (99 percent of the cases); 39% of deaths occurred among Latinx residents, 28% among White residents, 19% among Asian residents, 12% among African American residents, 1% among Native Hawaiian/Pacific Islander residents and 1% among residents identifying with other races. African Americans, Native Hawaiian/Pacific Islander, and people living in communities with high levels of poverty continue to have the highest rate of death per 100,000 people for COVID-19 when compared to other groups. Upon further investigation, 22 cases and one death reported earlier were not LA County residents. As of today, 5,142 people who tested positive for COVID-19 (19% of positive cases) have been hospitalized at some point during their illness. Testing capacity continues to increase in LA County, with testing results available for nearly 192,000 individuals and 13% of people testing positive.

"Our hearts are with all of you who have lost loved ones to COVID-19. We are so sorry for your loss, and hope you find healing and peace at this very difficult time," said Barbara Ferrer, PhD, MPH, MEd, Director of Public Health. "Today we are sharing the County's Roadmap to Recovery to ensure that as we reopen our businesses we do so in a way that is safe for employees and customers, continues to slow the spread of the virus, and does not result in increases in our death rate from COVID-19. I am so grateful to all of you who have worked together to get us to a place where a slow, safe reopening is possible."

As recovery planning continues, Public Health is issuing a five-stage [roadmap to recovery](#) that describes a phased approach to relaxing select directives of the Safer at Home Order and a reopening process for certain business sectors. LA County is currently in stage one of the Safer at Home recovery stage. However, the County anticipates beginning stage two as soon as Friday, May 8 by allowing florists and some retailers to offer curbside pickup. Car dealerships, golf courses and trails can also open with appropriate safeguards in place. Physical distancing and infection control protocols must be adhered to and cloth face coverings must be worn. Later next week additional restrictions will be lifted to include many retailers, manufacturers, and other recreational facilities. The next three stages include the potential opening in phases of higher-risk businesses like movie theaters, schools, colleges and universities, followed by conventions and spectator events, to finally normal operations. Each sector will have safe reopening protocols that must be adhered to.

Until final stage five is reached, Health Officer Orders and directives will still continue to ensure that we slow the spread of COVID-19 to prevent an overwhelming surge of COVID-19 cases at healthcare facilities. Physical distancing, wearing cloth face coverings, frequent hand washing, self-isolation and self-quarantine will continue to be very important throughout the foreseeable future. People who have underlying health conditions will still be at much greater risk for serious illness from COVID-19, so it will continue to be very important for the County's vulnerable residents to stay at home as much as possible, to have groceries and medicine delivered, and to know to call their providers immediately if they have even mild symptoms.

An interactive dashboard is available that provides an overview on COVID-19 testing, cases and deaths along with maps and graphs showing testing, cases and death data by community poverty level, age, sex and race/ethnicity. To view Public Health's COVID-19 Surveillance Dashboard, visit:

[http://dashboard.publichealth.lacounty.gov/covid19\\_surveillance\\_dashboard/](http://dashboard.publichealth.lacounty.gov/covid19_surveillance_dashboard/)

Additional things you can do to protect yourself, your family and your community are on the Public Health website, [www.publichealth.lacounty.gov](http://www.publichealth.lacounty.gov).

Please see additional information below:

	<b>Total Cases</b>
<b>Laboratory Confirmed Cases</b>	28644
-- Los Angeles County (excl. LB and Pas)	27373

-- Long Beach	789
-- Pasadena	482
<b>Deaths</b>	1367
-- Los Angeles County (excl. LB and Pas)	1268
-- Long Beach	38
-- Pasadena	61
<b>Age Group (Los Angeles County Cases Only-excl LB and Pas)</b>	
- 0 to 17	840
- 18 to 40	9244
- 41 to 65	11350
- over 65	5856
- Under Investigation	83
<b>Gender (Los Angeles County Cases Only-excl LB and Pas)</b>	
- Female	13587
- Male	13550
- Other	7
- Under Investigation	229
<b>Race/Ethnicity (Los Angeles County Cases Only-excl LB and Pas)</b>	
- American Indian/Alaska Native	15
- Asian	1721
- Black	1185
- Hispanic/Latino	8241

- Native Hawaiian/Pacific Islander	198
- White	3375
- Other	1228
- Under Investigation	11410

**Hospitalization (Los Angeles County Cases Only-excl LB and Pas)**

- Hospitalized (Ever)	5142
-----------------------	------

**Deaths Race/Ethnicity (Los Angeles County Cases Only-excl LB and Pas)**

- American Indian/Alaska Native	1
- Asian	234
- Black	155
- Hispanic/Latino	486
- Native Hawaiian/Pacific Islander	13
- White	354
- Other	17
- Under Investigation	8

**CITY / COMMUNITY\*\***

**Rate**

City of Agoura Hills	31	148.45
City of Alhambra	102	117.61
City of Arcadia	48	83.11
City of Artesia	15	89.31
City of Avalon	0	0

City of Azusa	89	177.86
City of Baldwin Park	124	161.52
City of Bell	142	390.84
City of Bell Gardens	121	280.93
City of Bellflower	158	203.25
City of Beverly Hills	116	336.04
City of Bradbury	1	93.55
City of Burbank	283	264.04
City of Calabasas	46	189.12
City of Carson	277	295.16
City of Cerritos	60	119.84
City of Claremont	27	74.01
City of Commerce	14	107.12
City of Compton	254	254.24
City of Covina	101	205.99
City of Cudahy	91	373.76
City of Culver City	88	220.75
City of Diamond Bar	38	66.07
City of Downey	253	221.42
City of Duarte	81	367.91
City of El Monte	202	172.25
City of El Segundo	30	178.72

City of Gardena	177	288.7
City of Glendale	669	323.98
City of Glendora	57	108.03
City of Hawaiian Gardens	11	74.95
City of Hawthorne	232	261.3
City of Hermosa Beach	25	127.1
City of Hidden Hills	0	0
City of Huntington Park	180	302.6
City of Industry	3	686.5
City of Inglewood	390	343.36
City of Irwindale	2	137.08
City of La Canada Flintridge	41	198.13
City of La Habra Heights	3	55
City of La Mirada	73	147.18
City of La Puente	47	115.49
City of La Verne	18	54.08
City of Lakewood	94	116.97
City of Lancaster	373	230.86
City of Lawndale	74	220.15
City of Lomita	40	192.97
City of Lynwood	232	322.01
City of Malibu	31	239.18

City of Manhattan Beach	67	186.12
City of Maywood	79	281.65
City of Monrovia	60	154.64
City of Montebello	166	257.86
City of Monterey Park	93	149.37
City of Norwalk	228	211.85
City of Palmdale	477	300.06
City of Palos Verdes Estates	40	295.81
City of Paramount	169	301.66
City of Pico Rivera	233	362.45
City of Pomona	221	141.73
City of Rancho Palos Verdes	71	166.09
City of Redondo Beach	115	167.4
City of Rolling Hills	2	103.09
City of Rolling Hills Estates	13	160.24
City of Rosemead	44	79.49
City of San Dimas	30	86.92
City of San Fernando	121	491.63
City of San Gabriel	40	97.67
City of San Marino	12	90.38
City of Santa Clarita	450	204.15
City of Santa Fe Springs	31	168.81

City of Santa Monica	198	214.18
City of Sierra Madre	5	45.5
City of Signal Hill	9	76.29
City of South El Monte	36	172.37
City of South Gate	290	295.45
City of South Pasadena	97	372.32
City of Temple City	58	159.1
City of Torrance	306	205
City of Vernon	1	478.47
City of Walnut	25	81.88
City of West Covina	151	139.51
City of West Hollywood	141	381.59
City of Westlake Village	6	71.77
City of Whittier	149	170.42
Los Angeles	13868	342.88
Los Angeles - Adams-Normandie	31	377.96
Los Angeles - Alsace	32	257.13
Los Angeles - Angeles National Forest	0	0
Los Angeles - Angelino Heights	10	399.68
Los Angeles - Arleta	144	418.97
Los Angeles - Atwater Village	34	231.83
Los Angeles - Baldwin Hills	74	237.75



Los Angeles - Bel Air	30	355.91
Los Angeles - Beverly Crest	34	271.46
Los Angeles - Beverlywood	33	250.51
Los Angeles - Boyle Heights	262	301.55
Los Angeles - Brentwood	66	213.21
Los Angeles - Brookside	0	0
Los Angeles - Cadillac-Corning	20	280.86
Los Angeles - Canoga Park	355	543.74
Los Angeles - Carthay	69	480.4
Los Angeles - Central	163	418.03
Los Angeles - Century City	30	234.52
Los Angeles - Century Palms/Cove	116	343.54
Los Angeles - Chatsworth	111	299.51
Los Angeles - Cheviot Hills	18	196.27
Los Angeles - Chinatown	9	112.21
Los Angeles - Cloverdale/Cochran	42	288.6
Los Angeles - Country Club Park	74	488.35
Los Angeles - Crenshaw District	54	390.48
Los Angeles - Crestview	70	615.76
Los Angeles - Del Rey	58	193.75
Los Angeles - Downtown	80	290.84
Los Angeles - Eagle Rock	105	265.23

Los Angeles - East Hollywood	145	495.1
Los Angeles - Echo Park	26	182.38
Los Angeles - El Sereno	111	265.5
Los Angeles - Elysian Park	10	175.07
Los Angeles - Elysian Valley	26	255.63
Los Angeles - Encino	93	205.88
Los Angeles - Exposition	5	150.33
Los Angeles - Exposition Park	151	336.18
Los Angeles - Faircrest Heights	4	111.11
Los Angeles - Figueroa Park Square	23	263.73
Los Angeles - Florence-Firestone	172	362.53
Los Angeles - Glassell Park	121	382.86
Los Angeles - Gramercy Place	39	362.32
Los Angeles - Granada Hills	137	235.43
Los Angeles - Green Meadows	83	385.96
Los Angeles - Hancock Park	67	393.22
Los Angeles - Harbor City	55	189.2
Los Angeles - Harbor Gateway	78	178.9
Los Angeles - Harbor Pines	2	83.02
Los Angeles - Harvard Heights	70	388.13
Los Angeles - Harvard Park	163	429.68
Los Angeles - Highland Park	104	214.92

Los Angeles - Historic Filipinotown	76	547.95
Los Angeles - Hollywood	202	295.95
Los Angeles - Hollywood Hills	66	224.23
Los Angeles - Hyde Park	86	301.32
Los Angeles - Jefferson Park	22	272.51
Los Angeles - Koreatown	162	313.39
Los Angeles - Lafayette Square	14	307.08
Los Angeles - Lake Balboa	119	281.95
Los Angeles - Lakeview Terrace	63	479.71
Los Angeles - Leimert Park	36	236.3
Los Angeles - Lincoln Heights	135	414.15
Los Angeles - Little Armenia	147	1831.78
Los Angeles - Little Bangladesh	85	299.9
Los Angeles - Little Tokyo	8	255.35
Los Angeles - Longwood	16	371.75
Los Angeles - Los Feliz	35	161.98
Los Angeles - Manchester Square	16	187.44
Los Angeles - Mandeville Canyon	1	32.01
Los Angeles - Mar Vista	59	138.92
Los Angeles - Marina Peninsula	9	206.42
Los Angeles - Melrose	394	507.1
Los Angeles - Mid-city	42	279.44

Los Angeles - Miracle Mile	36	200.17
Los Angeles - Mission Hills	86	356.49
Los Angeles - Mt. Washington	57	236.07
Los Angeles - North Hills	218	354.04
Los Angeles - North Hollywood	445	293.88
Los Angeles - Northridge	198	283.68
Los Angeles - Pacific Palisades	38	178.48
Los Angeles - Pacoima	376	488.44
Los Angeles - Palisades Highlands	3	78
Los Angeles - Palms	144	328.19
Los Angeles - Panorama City	382	507.64
Los Angeles - Park La Brea	13	95.73
Los Angeles - Pico-Union	308	736.1
Los Angeles - Playa Del Rey	1	31.29
Los Angeles - Playa Vista	20	182.7
Los Angeles - Porter Ranch	63	177.03
Los Angeles - Rancho Park	12	182.93
Los Angeles - Regent Square	3	107.91
Los Angeles - Reseda	278	362.84
Los Angeles - Reseda Ranch	23	496.12
Los Angeles - Reynier Village	9	212.87
Los Angeles - San Pedro	625	800.89

Los Angeles - Shadow Hills	9	202.61
Los Angeles - Sherman Oaks	153	175.35
Los Angeles - Silverlake	128	290.36
Los Angeles - South Carthay	25	235.96
Los Angeles - South Park	146	384.61
Los Angeles - St Elmo Village	22	479.93
Los Angeles - Studio City	56	249.55
Los Angeles - Sun Valley	178	339.16
Los Angeles - Sunland	107	524.3
Los Angeles - Sycamore Square	1	154.56
Los Angeles - Sylmar	446	541.28
Los Angeles - Tarzana	83	268.82
Los Angeles - Temple-Beaudry	187	473.63
Los Angeles - Thai Town	18	183.5
Los Angeles - Toluca Lake	11	126.38
Los Angeles - Toluca Terrace	2	153.14
Los Angeles - Toluca Woods	3	161.46
Los Angeles - Tujunga	82	294.86
Los Angeles - University Hills	7	204.14
Los Angeles - University Park	98	356.93
Los Angeles - Valley Glen	92	306.5
Los Angeles - Valley Village	138	558.25

Los Angeles - Van Nuys	401	430.29
Los Angeles - Venice	51	150.51
Los Angeles - Vermont Knolls	70	406.98
Los Angeles - Vermont Square	60	783.6
Los Angeles - Vermont Vista	155	376.34
Los Angeles - Vernon Central	270	519.25
Los Angeles - Victoria Park	39	464.34
Los Angeles - View Heights	7	189.5
Los Angeles - Watts	132	309.32
Los Angeles - Wellington Square	16	325.53
Los Angeles - West Adams	140	506.7
Los Angeles - West Hills	65	160.32
Los Angeles - West Los Angeles	61	162.08
Los Angeles - West Vernon	247	460.44
Los Angeles - Westchester	74	143.4
Los Angeles - Westlake	326	549.24
Los Angeles - Westwood	54	99.8
Los Angeles - Wholesale District	159	440.09
Los Angeles - Wilmington	118	208.9
Los Angeles - Wilshire Center	134	267.09
Los Angeles - Winnetka	195	376.55
Los Angeles - Woodland Hills	128	188.08

Unincorporated - Acton	8	100.36
Unincorporated - Agua Dulce	1	24.05
Unincorporated - Altadena	80	183.4
Unincorporated - Anaverde	1	66.31
Unincorporated - Angeles National Forest	0	0
Unincorporated - Arcadia	4	50.12
Unincorporated - Athens-Westmont	122	287.45
Unincorporated - Athens Village	14	285.89
Unincorporated - Avocado Heights	13	191.88
Unincorporated - Azusa	23	144.45
Unincorporated - Bandini Islands	0	0
Unincorporated - Bassett	33	222.72
Unincorporated - Bouquet Canyon	0	0
Unincorporated - Bradbury	0	0
Unincorporated - Canyon Country	27	349.38
Unincorporated - Castaic	22	80.91
Unincorporated - Cerritos	0	0
Unincorporated - Charter Oak	0	0
Unincorporated - Claremont	0	0
Unincorporated - Covina	30	178.37
Unincorporated - Covina (Charter Oak)	20	152.16
Unincorporated - Del Aire	10	227.63

Unincorporated - Del Rey	0	0
Unincorporated - Del Sur	2	82.82
Unincorporated - Desert View Highlands	4	160.45
Unincorporated - Duarte	10	225.84
Unincorporated - East Covina	0	0
Unincorporated - East La Mirada	8	151.17
Unincorporated - East Lancaster	0	0
Unincorporated - East Los Angeles	433	345.66
Unincorporated - East Pasadena	0	0
Unincorporated - East Rancho Dominguez	25	163.31
Unincorporated - East Whittier	4	75.39
Unincorporated - El Camino Village	12	136.5
Unincorporated - El Monte	0	0
Unincorporated - Elizabeth Lake	1	60.2
Unincorporated - Florence-Firestone	261	403.37
Unincorporated - Franklin Canyon	0	0
Unincorporated - Glendora	2	303.03
Unincorporated - Hacienda Heights	59	105.5
Unincorporated - Harbor Gateway	0	0
Unincorporated - Hawthorne	4	159.11
Unincorporated - Hi Vista	0	0
Unincorporated - Kagel/Lopez Canyons	1	70.82



Unincorporated - La Crescenta-Montrose	17	85.85
Unincorporated - La Habra Heights	0	0
Unincorporated - La Rambla	6	289.16
Unincorporated - La Verne	2	98.04
Unincorporated - Ladera Heights	16	226.28
Unincorporated - Lake Hughes	0	0
Unincorporated - Lake Los Angeles	24	184.7
Unincorporated - Lake Manor	3	182.59
Unincorporated - Lakewood	0	0
Unincorporated - Lennox	61	270.61
Unincorporated - Leona Valley	1	57.11
Unincorporated - Littlerock	11	273.56
Unincorporated - Littlerock/Juniper Hills	1	77.1
Unincorporated - Littlerock/Pearblossom	7	196.13
Unincorporated - Llano	1	114.03
Unincorporated - Lynwood	0	0
Unincorporated - Marina del Rey	11	116.88
Unincorporated - Miracle Mile	0	0
Unincorporated - Monrovia	11	283.43
Unincorporated - Newhall	0	0
Unincorporated - North Lancaster	3	250.42
Unincorporated - North Whittier	6	71.77

Unincorporated - Northeast San Gabriel	20	83.21
Unincorporated - Palmdale	4	475.06
Unincorporated - Palos Verdes Peninsula	0	0
Unincorporated - Pearblossom/LLano	2	102.25
Unincorporated - Pellissier Village	0	0
Unincorporated - Placerita Canyon	0	0
Unincorporated - Pomona	0	0
Unincorporated - Quartz Hill	29	224.7
Unincorporated - Rancho Dominguez	11	413.38
Unincorporated - Roosevelt	0	0
Unincorporated - Rosewood	5	388.8
Unincorporated - Rosewood/East Gardena	0	0
Unincorporated - Rosewood/West Rancho Dominguez	11	327.28
Unincorporated - Rowland Heights	61	119.56
Unincorporated - San Clemente Island	0	0
Unincorporated - San Francisquito Canyon/Bouquet Canyon	0	0
Unincorporated - San Jose Hills	27	133.52
Unincorporated - San Pasqual	0	0
Unincorporated - Sand Canyon	0	0
Unincorporated - Santa Catalina Island	2	749.06
Unincorporated - Santa Monica Mountains	19	102.04
Unincorporated - Saugus	3	1935.48

Unincorporated - Saugus/Canyon Country	0	0
Unincorporated - South Antelope Valley	0	0
Unincorporated - South Edwards	0	0
Unincorporated - South El Monte	2	111.42
Unincorporated - South San Gabriel	12	135.62
Unincorporated - South Whittier	77	130.02
Unincorporated - Southeast Antelope Valley	0	0
Unincorporated - Stevenson Ranch	19	90.62
Unincorporated - Sun Village	7	115.97
Unincorporated - Sunrise Village	1	77.16
Unincorporated - Twin Lakes/Oat Mountain	4	241.25
Unincorporated - Universal City	0	0
Unincorporated - Val Verde	105	3173.16
Unincorporated - Valencia	5	162.76
Unincorporated - Valinda	31	132.64
Unincorporated - View Park/Windsor Hills	28	240.65
Unincorporated - Walnut	0	0
Unincorporated - Walnut Park	52	322.12
Unincorporated - West Antelope Valley	2	132.36
Unincorporated - West Carson	68	307.89
Unincorporated - West Chatsworth	0	0
Unincorporated - West LA	21	2205.88

Unincorporated - West Puente Valley	19	193.19
Unincorporated - West Rancho Dominguez	2	147.17
Unincorporated - West Whittier/Los Nietos	49	181.99
Unincorporated - Westfield/Academy Hills	0	0
Unincorporated - Westhills	0	0
Unincorporated - White Fence Farms	2	54.3
Unincorporated - Whittier	6	158.56
Unincorporated - Whittier Narrows	0	0
Unincorporated - Willowbrook	67	191.91
Unincorporated - Wiseburn	8	132.74
- Under Investigation	1545	

\*These numbers are subject to change based on further investigation. Twenty-two cases and one death reported earlier were not in Public Health's jurisdiction.

\*\*Rate is crude and is per 100,000. This represents the number of cases per 100,000 people and allows for the proportional comparison of cities of different sizes.

Always check with trusted sources for the latest accurate information about novel coronavirus:

- Los Angeles County Department of Public Health: <http://publichealth.lacounty.gov/media/Coronavirus/>
- California Department of Public Health: <https://www.cdph.ca.gov/Programs/CID/DCDC/Pages/Immunization/nCOV2019.aspx>
- Centers for Disease Control and Prevention: <https://www.cdc.gov/coronavirus/2019-ncov/index.html>

Spanish <https://espanol.cdc.gov/enes/coronavirus/2019-ncov/index.html>

- World Health Organization <https://www.who.int/health-topics/coronavirus>
- LA County residents can also call 2-1-1

# ROADMAP TO RECOVERY

COVID-19

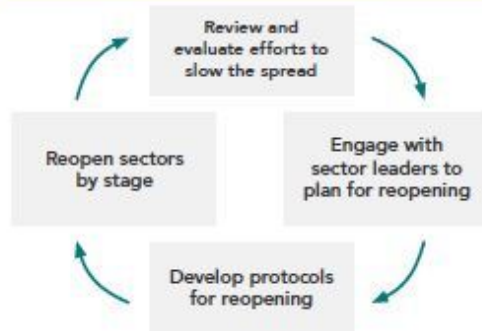
## A PHASED APPROACH TO REOPENING SAFELY IN LOS ANGELES COUNTY

Los Angeles County has worked together to slow the spread of COVID-19 by following the Safer at Home order. As we plan for recovery and the gradual relaxing of Safer at Home, we are sharing the Department of Public Health's Roadmap to Recovery. This provides goalposts for reopening as safely as possible.

### Safeguards In Place Before Opening



### Process for Staged Reopening



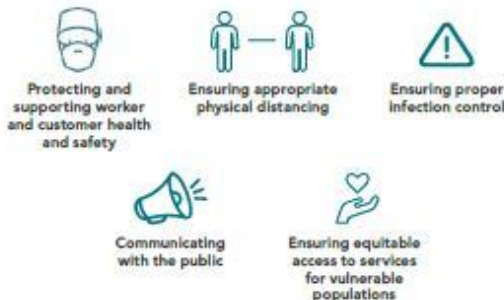
### Five-Stage Reopening Process Based On Risk

Stage One <i>Now</i>	Stage Two <i>Soon</i>	Stage Three <i>TBD</i>	Stage Four <i>TBD</i>	Stage Five <i>TBD</i>
<p>Safer at Home Order Planning for Recovery</p>	<p><b>May 8th</b></p> <ul style="list-style-type: none"> <li>Florists, some retailers, car dealerships, golf courses and trails</li> </ul> <p><b>Soon</b></p> <ul style="list-style-type: none"> <li>Other low-risk businesses (manufacturers, offices, retail)</li> <li>Essential health care</li> <li>Outdoor recreation and libraries</li> <li>Museums, cultural centers, galleries</li> </ul>	<ul style="list-style-type: none"> <li>Higher-risk businesses (body art, massage, bars/nightclubs)</li> <li>Movie theatres and bowling alleys</li> <li>K-12 Schools</li> <li>Colleges and universities</li> </ul>	<ul style="list-style-type: none"> <li>Highest risk businesses (entertainment venues)</li> <li>Large conventions</li> <li>Sporting and spectator events</li> </ul>	<p>Fully normal operations</p>

### Planning For Safe Reopening

### Are We Slowing The Spread?

Each sector will have a safe reopening guidelines that addresses the following areas of concern:



How capable are we of slowing the spread?

- Do we have sufficient hospital capacity, including ventilators and ICU beds?
- Is the supply of PPE adequate for all health care workers?
- Do we have sufficient testing capacity and testing supplies?
- Do we have sufficient case and contact tracing capacity?



How effective are we in slowing the spread?

- Are mortality rates by age, poverty status, and race/ethnicity relatively stable?
- Are hospitalization rates by age, poverty status, and race/ethnicity relatively stable?
- Do all high-risk populations have adequate access to testing?



The Department of Public Health is committed to promoting health equity and ensuring optimal health and well-being for all 10 million residents of Los Angeles County. Through a variety of programs, community partnerships and services, Public Health oversees environmental health, disease control, and community and family health. Nationally accredited by the Public Health Accreditation Board, the Los Angeles County Department of Public Health comprises nearly 4,500 employees and has an annual budget of \$1.2 billion.

*Los Angeles County Department of Public Health works to protect health, prevent disease, and promote health and well-being.*

SUBSCRIBER SERVICES: [Manage Subscriptions](#) | [Help](#)

